



NORTH CAROLINA

Department of Transportation



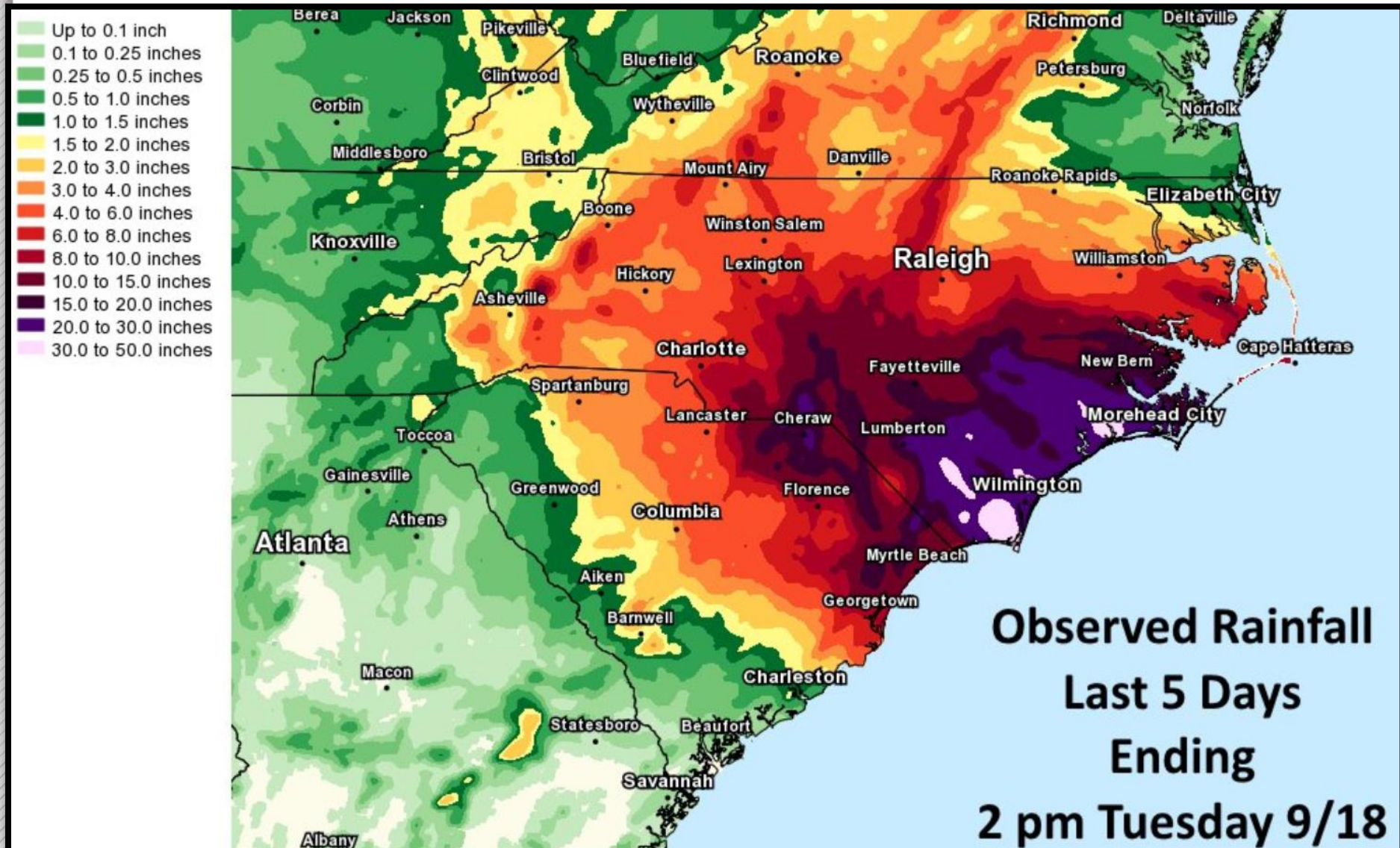
Hurricane Florence

Lessons Learned from Previous Storms

Greg Burns, PE - Division 6 Engineer

October 3, 2018

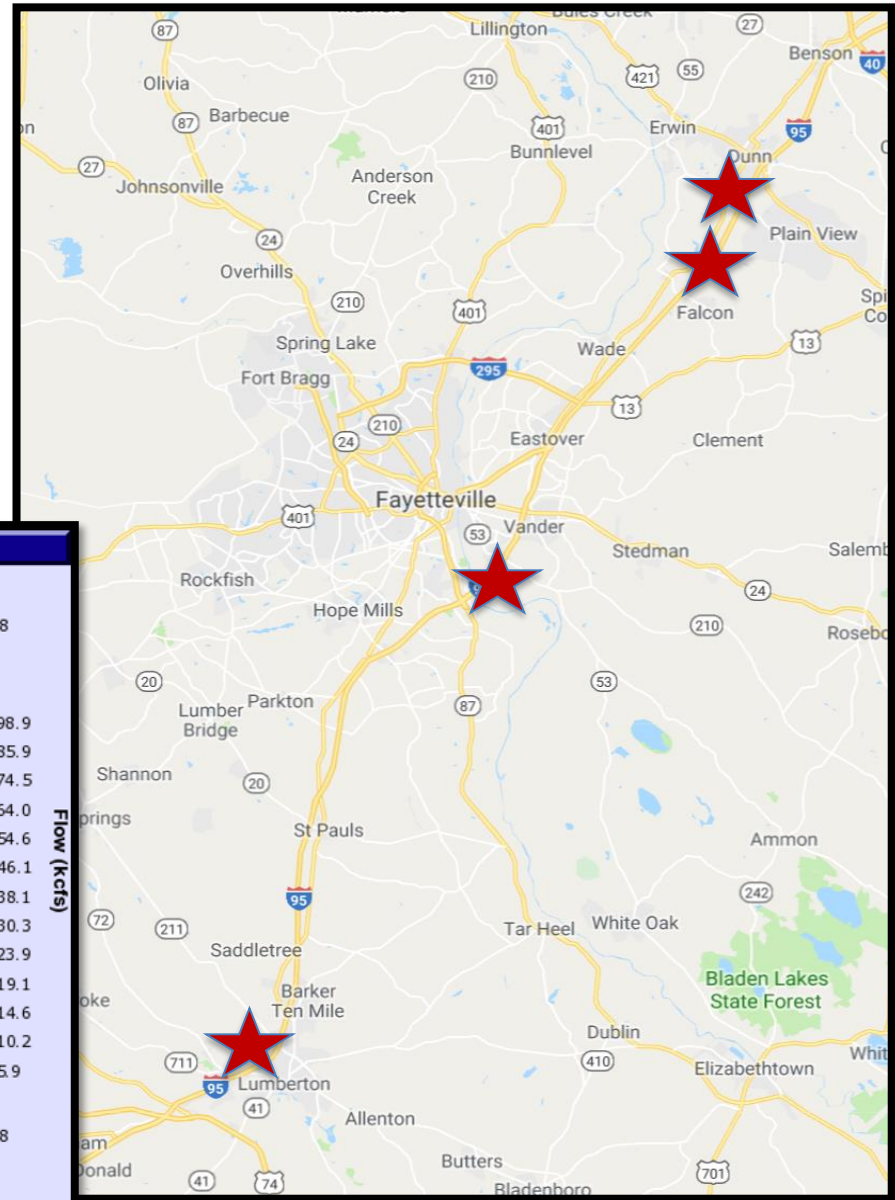
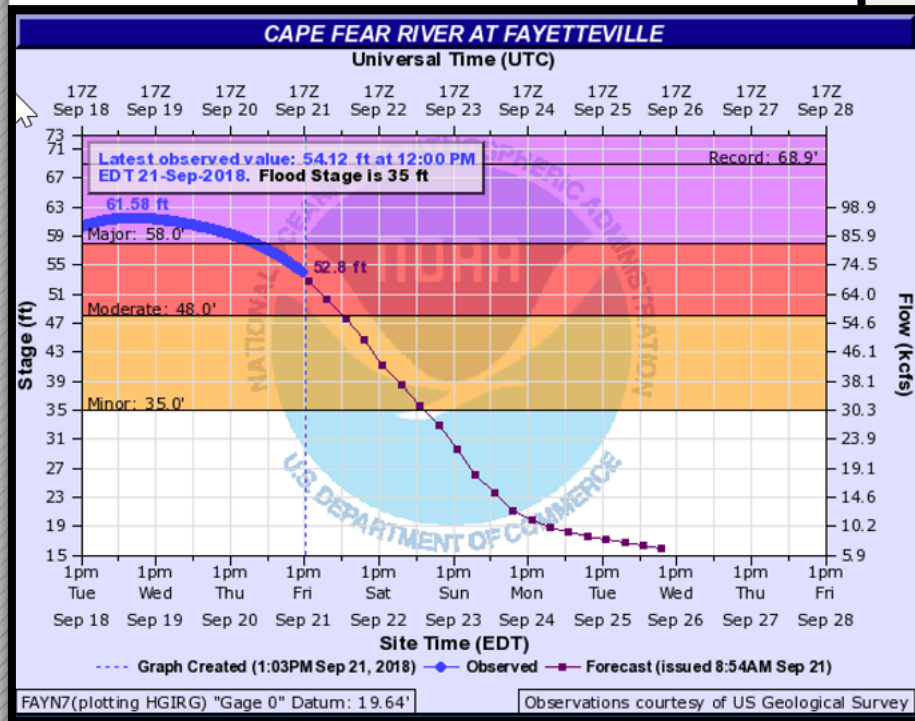
Flooding on I-95 and US 74



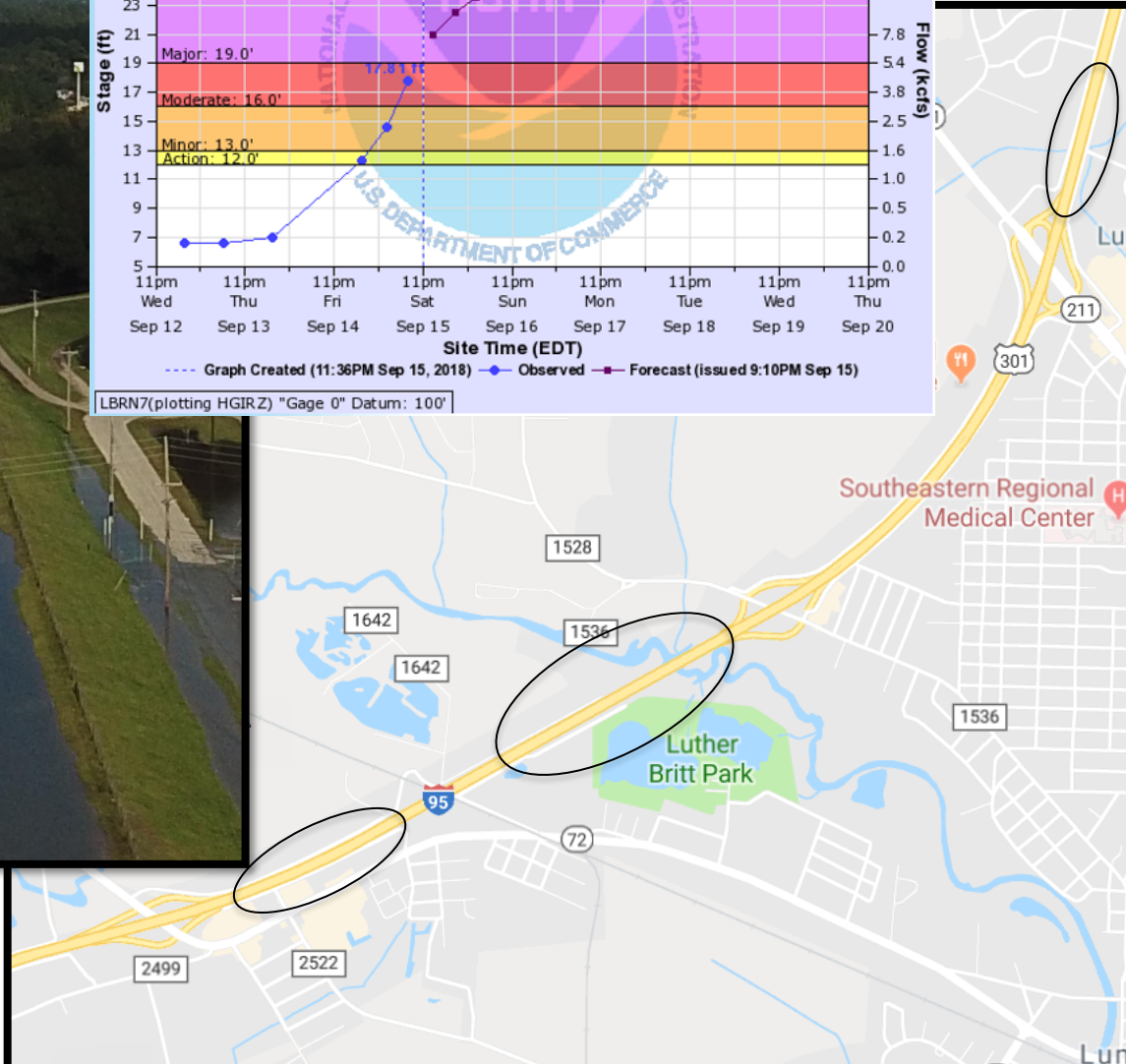
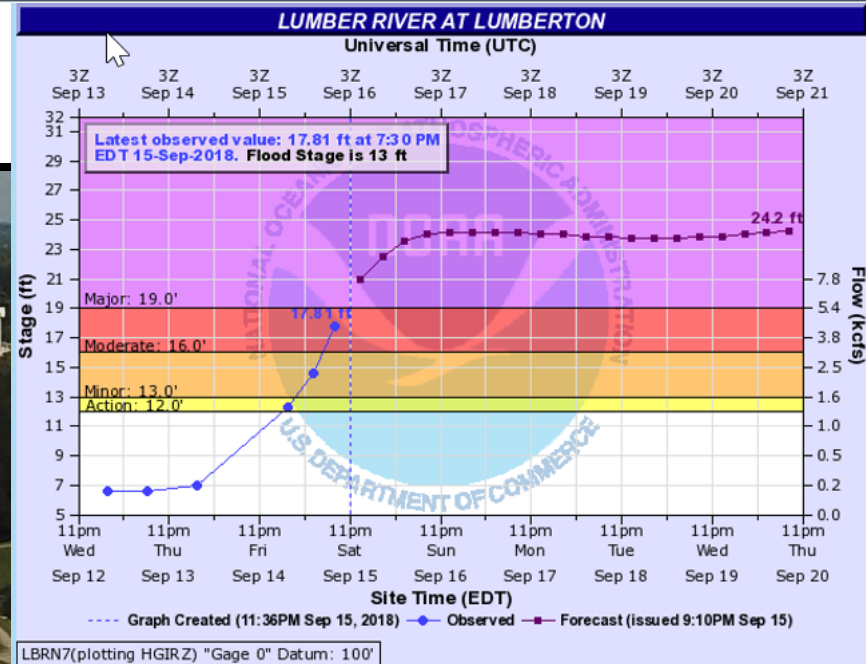
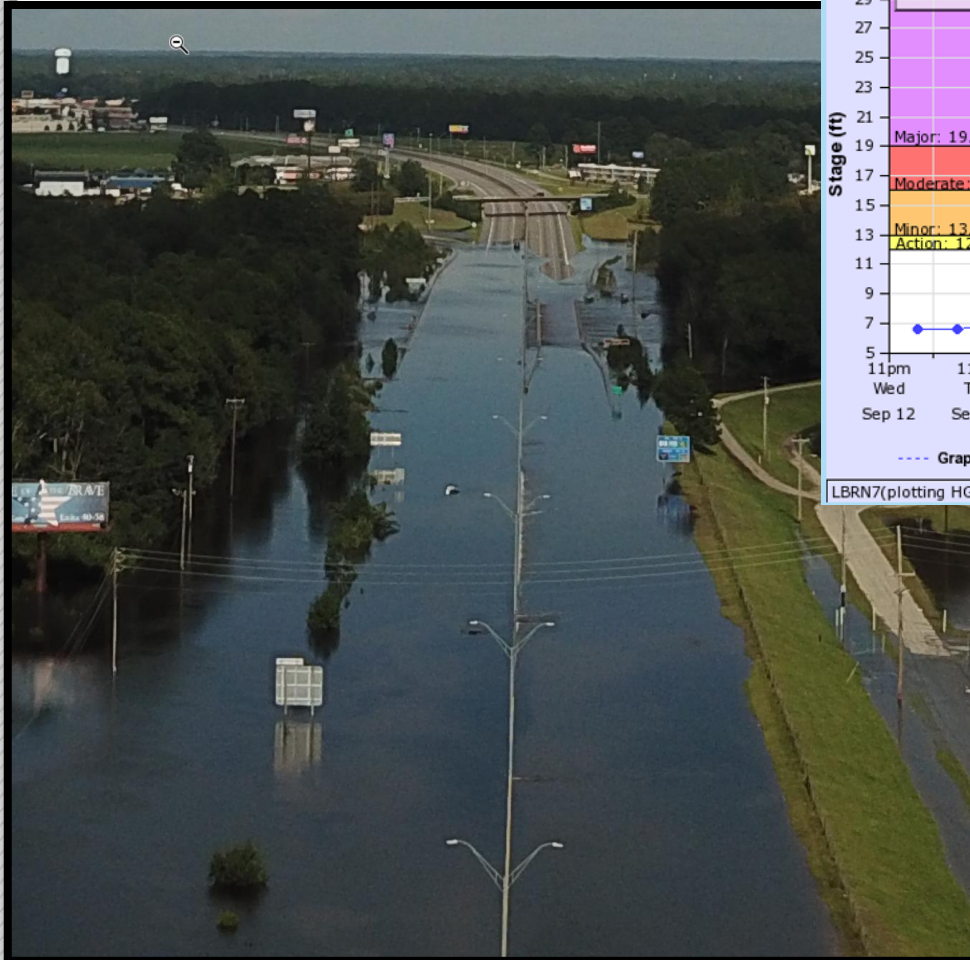
- I-95 Flooding

4 Locations in Hurricane
Florence

7 Locations in Hurricane
Matthew



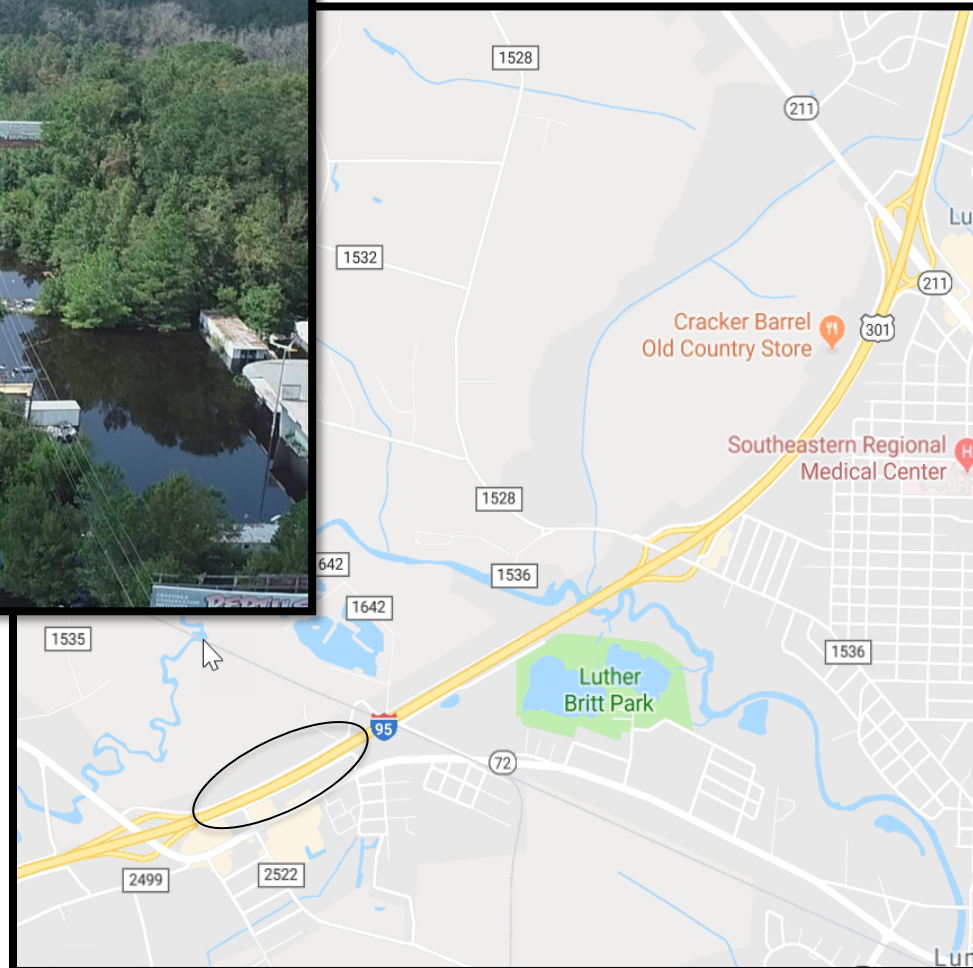
I-95 Flooding in Lumberton



I-95 Flooding in Lumberton



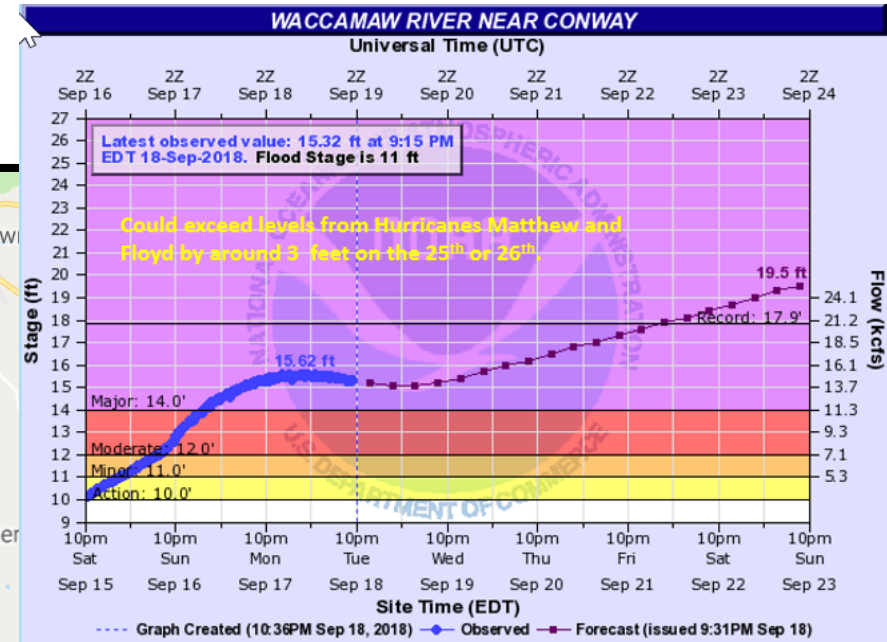
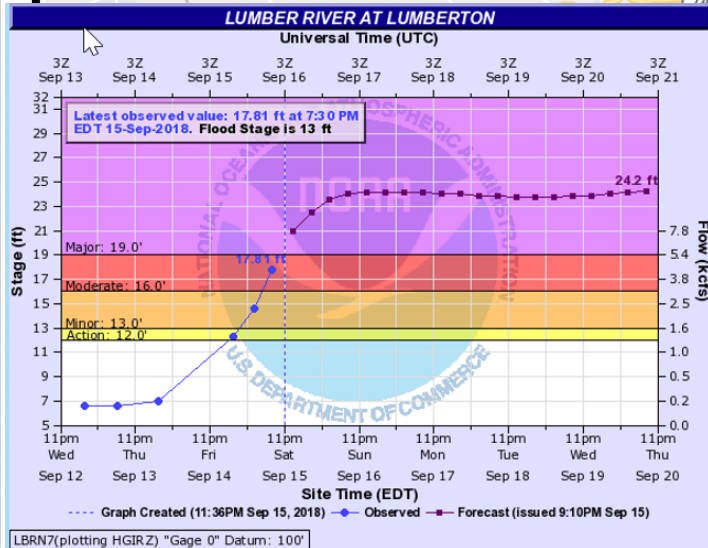
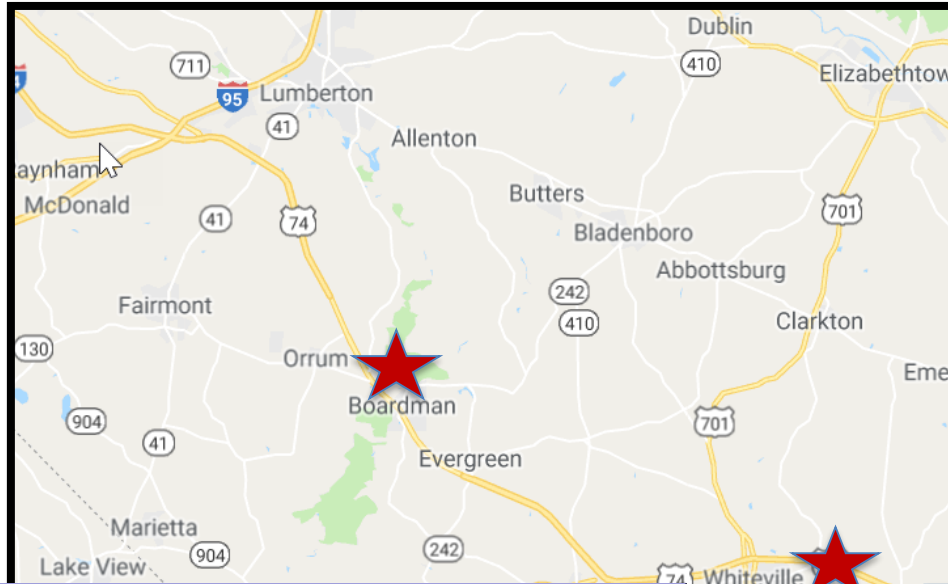
I-95 Flooding near Lumberton



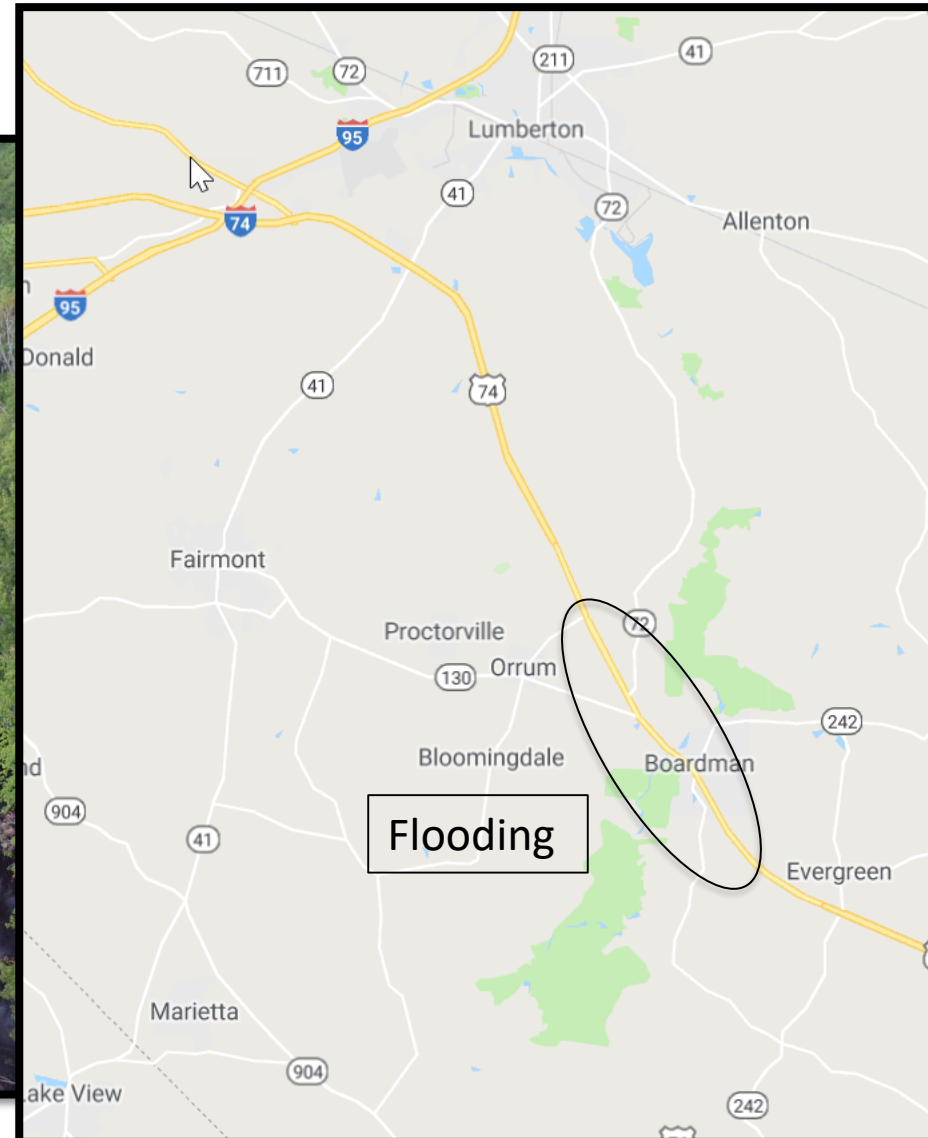
Flooding in Lumberton



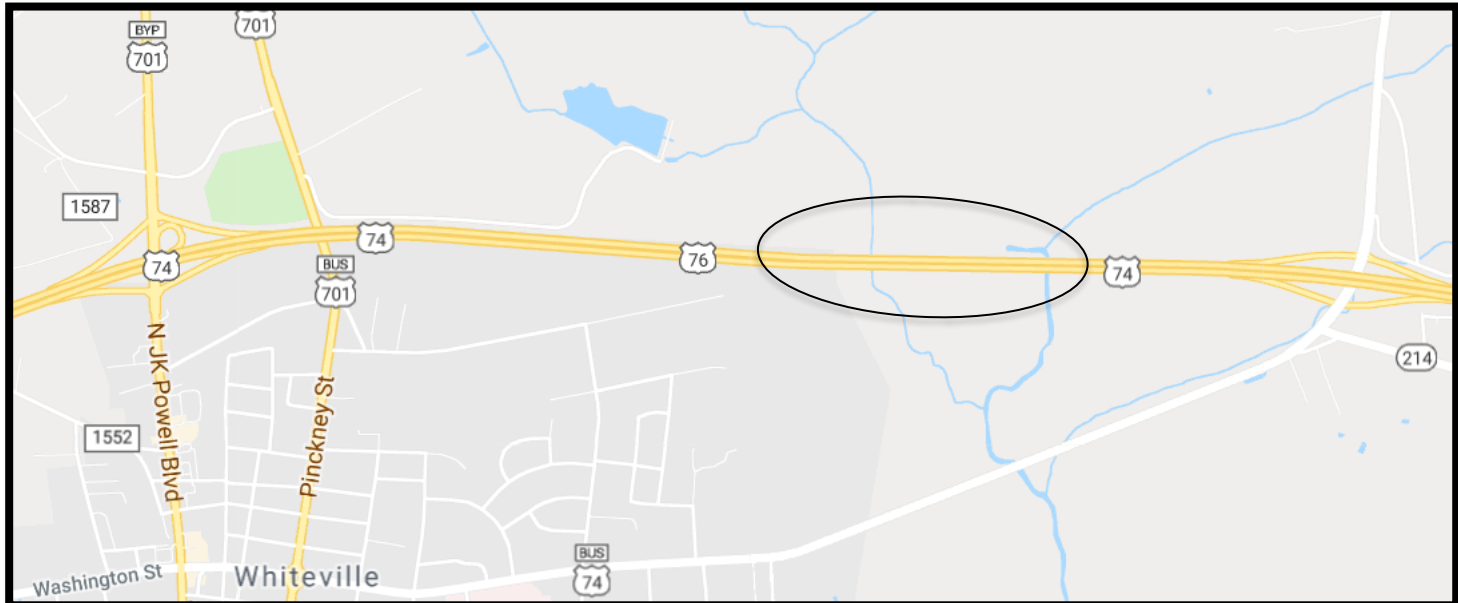
US 74 Flooding



US 74 near Boardman



US 74 near Whiteville

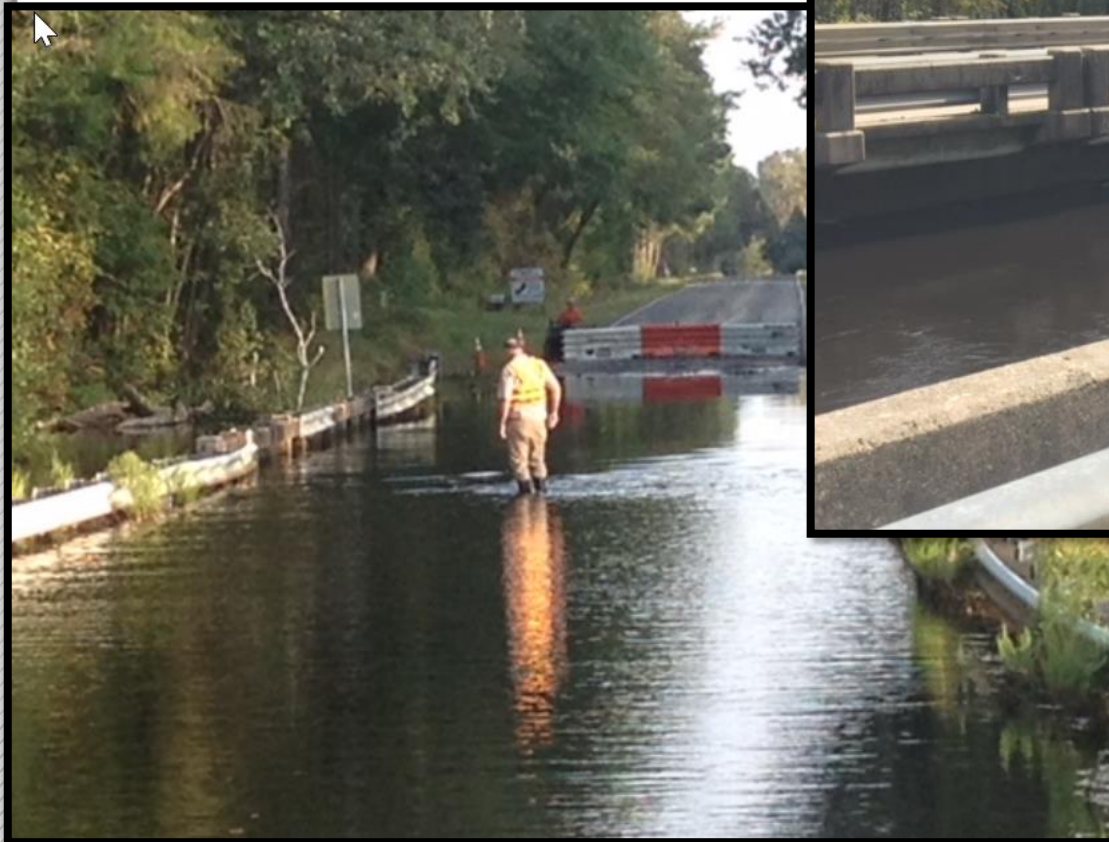


Lessons Learned from Previous Storms

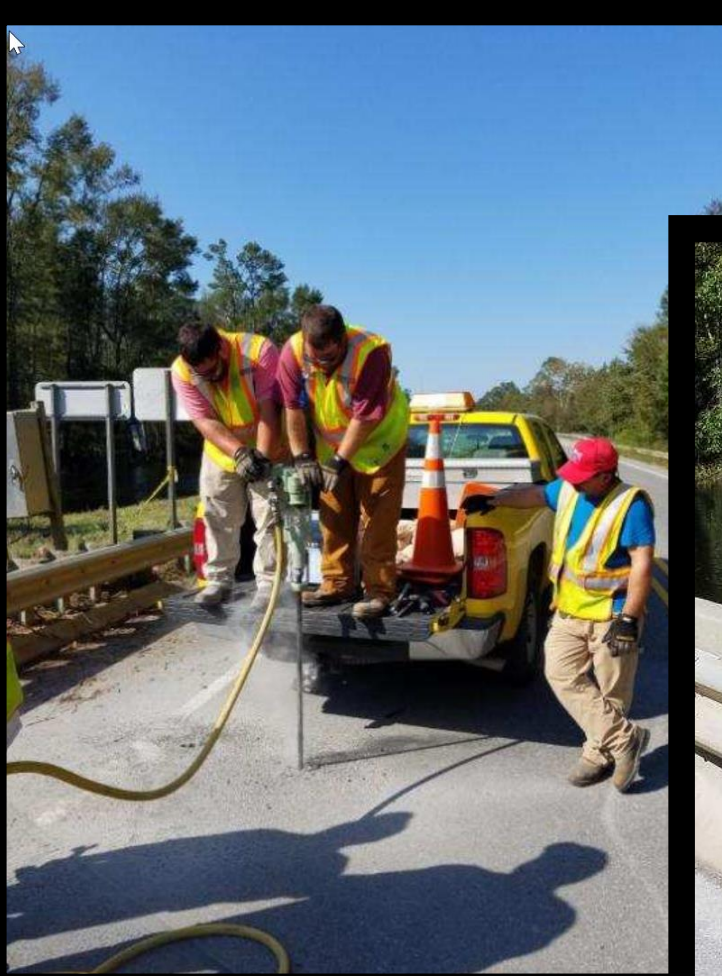
- Statewide Plan for Managing Traffic
- Bridge Inspection
- Opening The Road
- SHP and SCDOT Coordination

Bridge Inspection

- Improved Coordination
- Bridge Inspection Teams
- Dive Teams



Bridge Inspection



Bridge Inspection

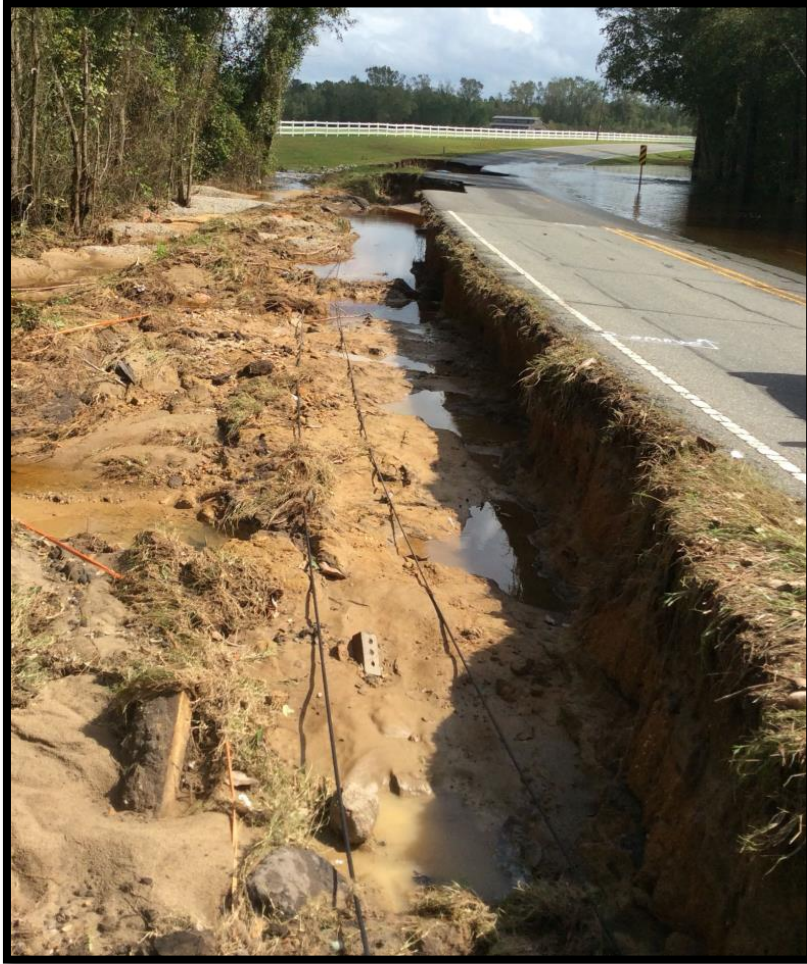


- Multiple Foam Injection Contractors
- NCDOT Grout Crews

Bridge Inspection



Opening the Road

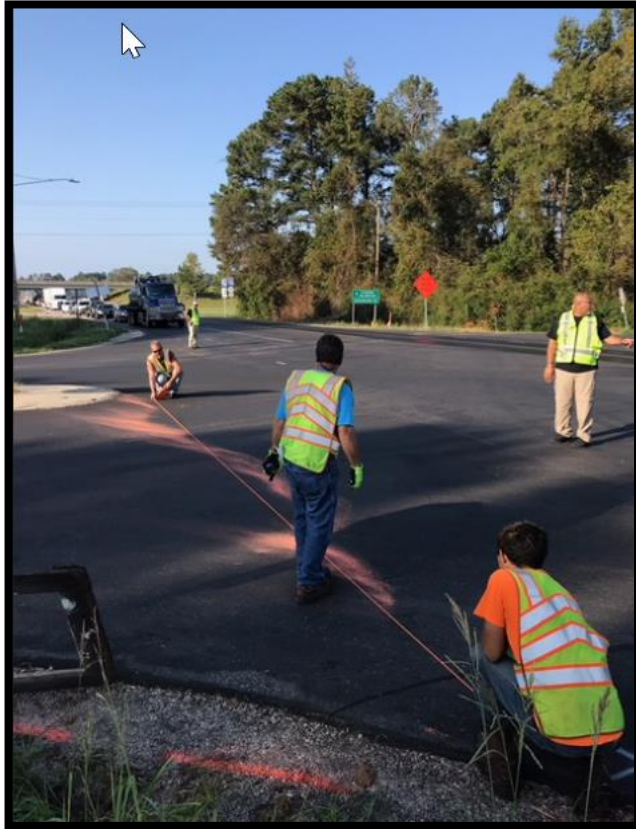


Quick Response

State Forces and Contracting Partners



Opening the Road



Signal in a day

- Work began at 8:30 am
- Signal operational at 6:00 pm



Opening the Road



Coordination and Communication

- SHP
- SCDOT

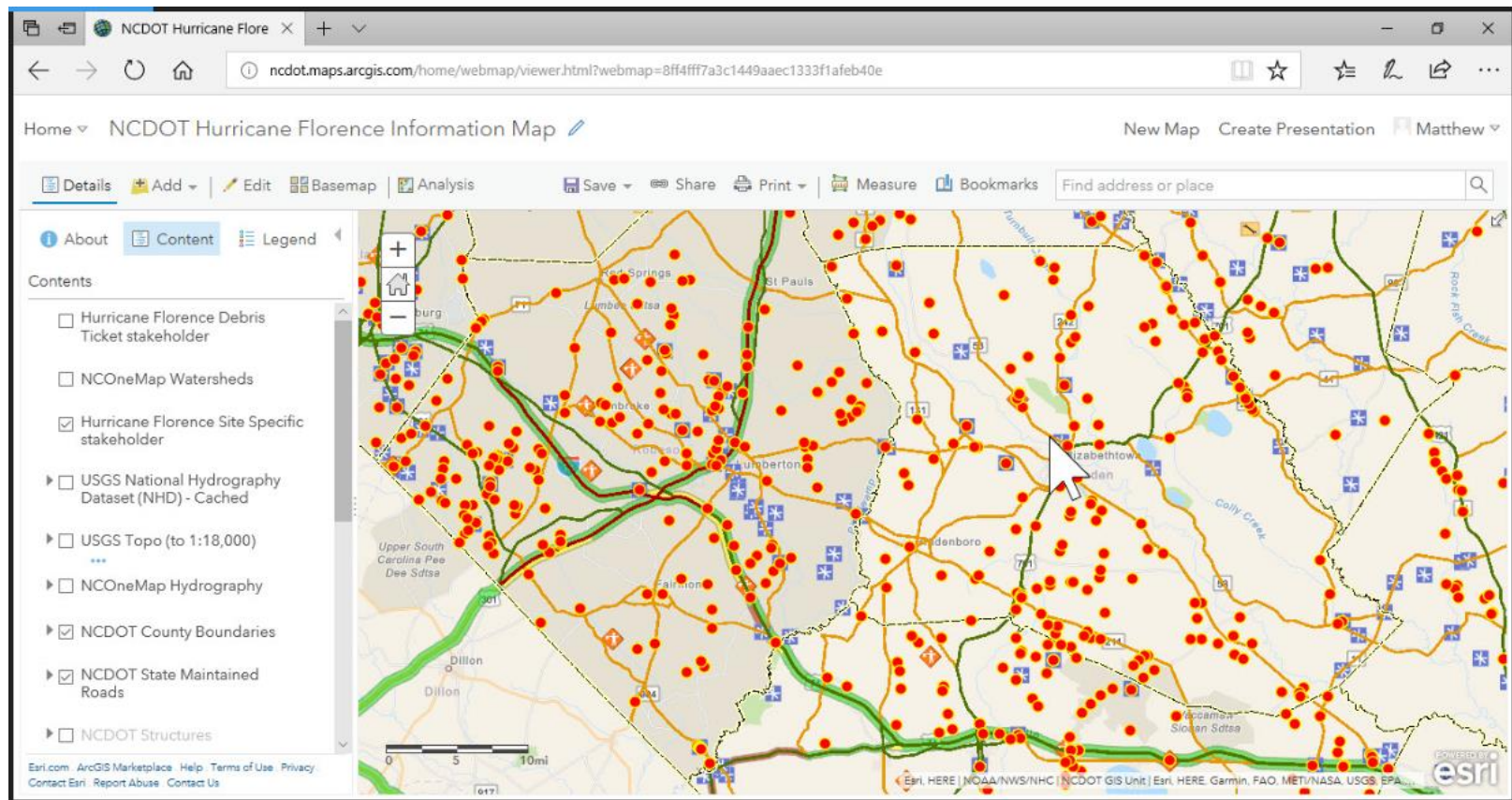
New Tools - Survey 123



The screenshot shows the 'ASSIST' app interface. At the top, the status bar indicates 'Verizon LTE', '7:31 AM', and '89%' battery. The app header is blue with the text 'ASSIST' and a menu icon. Below the header, there is a form for site information. The form includes the following fields:

- Date of Inspection ***: Enter the date that the site was inspected. (Dropdown menu showing 'September 11, 2018')
- Name of Damage Inspector ***: Provide your first and last name for record keeping. (Text input field)
- Phone Number of Damage Inspector ***: Provide your phone number. (Text input field)
- Site Number**: Provide a site number for record keeping. (This will be changed to WBS number later) (Text input field)
- Division ***: What Division is the site located in? (Dropdown menu)

Survey 123



Survey 123

